



Products for Railway

- ✓ Power Line Transducers
- ✓ Analog Panel Meters
- ✓ Digital Panel Meters
- ✓ Digital Multimeters
- ✓ Digital Clampmeters
- ✓ Insulation Testers
- ✓ Testing & Measuring Instruments
- ✓ Thermal Imaging Camera
- ✓ Infrared Thermometer
- ✓ Calibrators

+60 YEARS
ONE MISSION



Reliable



Long-Lasting



Affordable

POWER LINE TRANSDUCERS

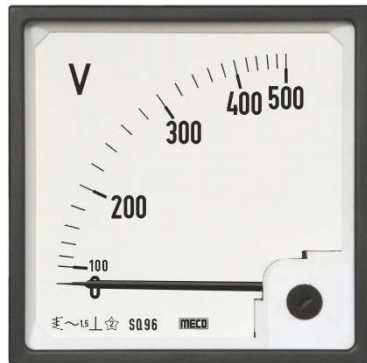
CE



- ✓ Low Ripple in Output Signal
- ✓ Choice of Multiple Asymmetrical Outputs
- ✓ Wide Choices of Suppressed Ranges
- ✓ Open and Short Circuit Protection for Outputs
- ✓ Dual Output (Non-Isolated)
- ✓ Self-Powered, AC, DC, SMPS Auxilliary Supply
- ✓ Bi-Directional Outputs
- ✓ Fast Response Time
- ✓ Bi-Directional Inputs for Import / Export

ANALOG PANEL METERS

CE



- ✓ AC Moving Iron Meters
- ✓ DC Moving Coil Meters
- ✓ AC Moving Coil Rectifier Type Meters
- ✓ Electronic Type W / VAR / PF / Hz Meters
- ✓ Rectangular AC & DC Meters
- ✓ Standard : IS1248
- ✓ Deflection : 90°C & 240°C
- ✓ Size (mm) : 72 x 72, 96 x 96, 144 x 144 & 110 x 110

4 Digit Programmable Ammeter / Voltmeter - TRMS (Professional Series)



- ✓ 4 Digit 9999 Counts Red LED Super Bright Display
- ✓ TRMS Using Microcontroller
- ✓ User Programmable Display (CT Primary / PTR / Shunt Value)
- ✓ Auto Selection of Decimal Point
- ✓ Over Range Indication
- ✓ 85-265V AC/DC or 19-90V AC/DC Auxilliary Supply
- ✓ Accuracy $\pm 0.5\%$ of FSD
- ✓ Size (mm) : 48 x 96 & 96 x 96

3⁵/₆ Digit 6000 Counts TRMS Autoranging Digital Multimeter

CE



- ✓ 1000V DC & 750V AC
- ✓ 20A DC / AC
- ✓ Holster with Stand
- ✓ Temperature (K Type Thermocouple)
- ✓ Frequency, Capacitance, Resistance & Duty Cycle
- ✓ Diode Test, Audible Continuity, Data Hold
- ✓ Backlight, Auto Power Off
- ✓ CAT IV 600V, CAT III 1000V

3½ Digit 6000 Counts 600A DC / AC – TRMS Digital Clampmeter

CE



- ✓ 600V & 600A DC / AC
- ✓ Resistance, Capacitance, Frequency
- ✓ Temperature (K Type Thermocouple)
- ✓ NCV (LED, Buzzer & EF Strength)
- ✓ Torch Light + Backlight
- ✓ Duty Cycle
- ✓ Diode Test, Audible Continuity
- ✓ Data Hold
- ✓ Auto Power Off

3½ Digit 6000 Counts 600A DC / AC – TRMS Digital Clampmeter



- ✓ 600V & 600A DC / AC
- ✓ Temperature (K Type Thermocouple)
- ✓ NCV (LED, Buzzer & EF Strength)
- ✓ Backlight + Torch Light
- ✓ Resistance, Capacitance, Frequency
- ✓ Duty Cycle, Diode Test, Audible Continuity
- ✓ LoZ (DCV / ACV) & VFC
- ✓ Data Hold
- ✓ Auto Power Off

Analog Insulation Tester

CE

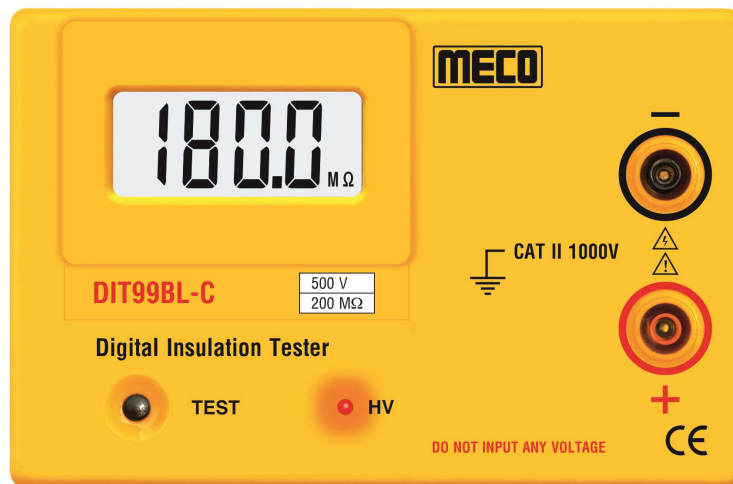


- ✓ Single Person Push Button Operation
- ✓ Meets IEC 61010, CAT II
- ✓ Designed As Per IS 10656-1983
- ✓ Battery Adaptor (Optional - BA Series)

Model	Range	Test Voltage DC
MC-901	0 - 20 MΩ	100V
MC-903	0 - 100 MΩ	500V
MC-904	0 - 500 MΩ	500V
MC-941	0 - 1000 MΩ	500V
MC-906	0 - 200 MΩ	1000V
MC-907	0 - 500 MΩ	1000V
MC-981	0 - 2000 MΩ	1000V

Digital Insulation Tester

CE



- ✓ Single Person Push Button Operation
- ✓ Meets IEC 61010, CAT II
- ✓ Designed As Per IS 10656-1983
- ✓ Battery Adaptor (Optional - BA Series)

Model	Range	Test Voltage DC
DIT99BL - A	0 - 20 MΩ	100V
DIT99BL - B	0 - 200 MΩ	500V
DIT99BL - C	0 - 200 MΩ	500V
DIT99BL - D	0 - 200 MΩ	500V
DIT99BL - E	0 - 2000 MΩ	1000V

2.5kV - 20G Ohms Digital Insulation Tester

CE



- ✓ 500V - 1000V - 2.5kV / 0.1M Ohm To 20G Ohm
- ✓ Single Person Push Button Operation
- ✓ 600V AC Voltage Measurement
- ✓ Auto Range (Insulation Test)
- ✓ Red LED Indicator for High Voltage
- ✓ Low Battery Indication / Low Resistance Warning
- ✓ IS 10656-1983 and EMC IEC 61326 Class B
- ✓ CAT III 600V, IEC / EN 61010-1 & 61010-31

5kV - 200G Ohms Digital Insulation Tester

CE



- ✓ 1000V - 2.5kV - 5kV / 0.1M Ohm To 200G Ohm
- ✓ 600V AC Voltage Measurement
- ✓ Red LED Indicator for High Voltage
- ✓ Phase Sequence, Phase Status Indication and Beep Facility
- ✓ Protection to Prevent the Harm of Reverse Voltage
- ✓ Over Range Indication
- ✓ Battery Operated with AC Adaptor
- ✓ IS 10656-1983 and EMC IEC 61326 Class B
- ✓ CAT III 600V, IEC / EN 61010-1 & 61010-31

Clamp - On Earth / Ground Resistance and Leakage Current Tester

CE



- ✓ Non Contact Ground Resistance Measurement
- ✓ 4 Digit 9999 Counts LCD Backlight Display
- ✓ No Auxilliary Electrodes Needed
- ✓ Ground Resistance Measurement 0.01Ω ~ 1000Ω
- ✓ Leakage Current (0.5mA ~ 30.00A) (Model 4680BLC)
- ✓ Data Storage Memory
- ✓ Data Hold, Noise Signal, Auto Power Off
- ✓ Suitable for Earthing Strip Upto 65mm
- ✓ Suitable for Round Conductor Upto 25mm Dia.

LCR Meter



- ✓ Measures L, C, R, Z, D, Q, θ and ESR
- ✓ Signal Frequency 100Hz, 120Hz, 1KHz & 10KHz
- ✓ Automatic Identification Function (Ai)
- ✓ Test Terminals 2, 4 & 5 Terminals
- ✓ Automatic Correction Function with Data Hold / Max / Min / Average Recording
- ✓ Series & Parallel Modes, Short & Open Correction
- ✓ Holster and Backlight
- ✓ USB Interface with Software
- ✓ Rechargeable Battery and AC Adaptor

Micro - Ohmmeter (7272) / Milli - Ohmmeter (7002)



- ✓ Four Terminal Kelvin Measurement
- ✓ Measurement of Resistive and Inductive Materials
- ✓ Test Current : 10A (60mΩ) for 7272, 5A (120mΩ) for 7002
- ✓ Cable Length Measurement in feet & meters
- ✓ Large LCD with Backlight & Data Hold Function
- ✓ Manual / Auto Range
- ✓ Memory for 3000 Measurements Data
- ✓ Rechargeable Batteries with AC Adaptor
- ✓ RS232 - USB Bridge Cable with Software

Industrial Infrared Thermometers

CE



- ✓ Temperature : -50°C ~ 600°C / -50°F ~ 1112°F
- ✓ °C / °F Selection
- ✓ Laser Switch
- ✓ Low Battery Indication
- ✓ Backlight Display
- ✓ MAX / MIN / DIF / AVG Function
- ✓ Data Storage
- ✓ High / Low Temperature Alarm Setting Function
- ✓ Auto Power Off

Thermal Imaging Camera

CE



- ✓ 2.4" Color Display
- ✓ Infrared Image Resolution : 60 x 60
- ✓ Total Pixels : 3600, File Format : BMP
- ✓ Temp. Range : -20°C ~ 300°C / -4°F ~ 572°F
- ✓ Wavelength Range : 8 ~ 14μm
- ✓ Storage : Micro SD Card (4 GB)
- ✓ Image Capturing Frequency : 6Hz
- ✓ Palette : Iron Color, Rainbow High Contrast, Gray Scale (Black Glow) & White Scale (White Glow)

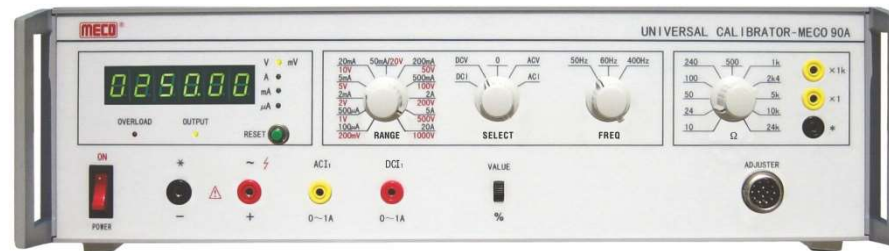
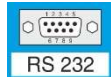
Clamp-On TRMS Power Meter (1000A, 600kW)

CE

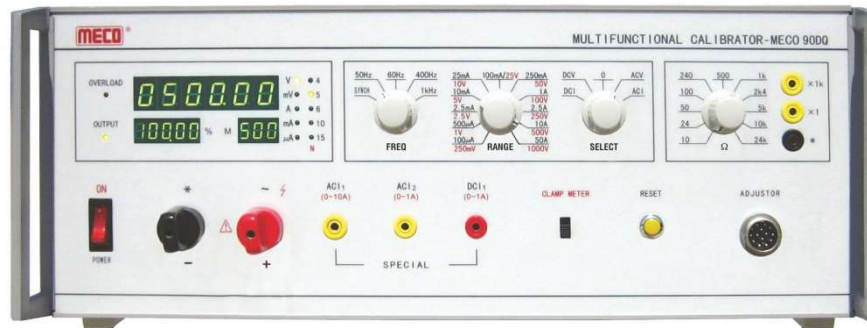


- ✓ 1 ϕ and 3 ϕ (3 ϕ 3W / 3 ϕ 4W) Power Analyzer
- ✓ 4 Digit 9999 Counts LCD
- ✓ TRUE Power, AC Inrush Current, Phase Angle
- ✓ Dual Display, Autoranging
- ✓ HP, KW, KVA, KVAR, HZ, PF, AC A, AC / DC V
- ✓ Resistance, Capacitance, Temperature
- ✓ Diode Test, Data Hold, Auto Power Off
- ✓ Jaw Opening Cable / Conductor Upto 43mm / Bus Bar Upto 65 x 16mm

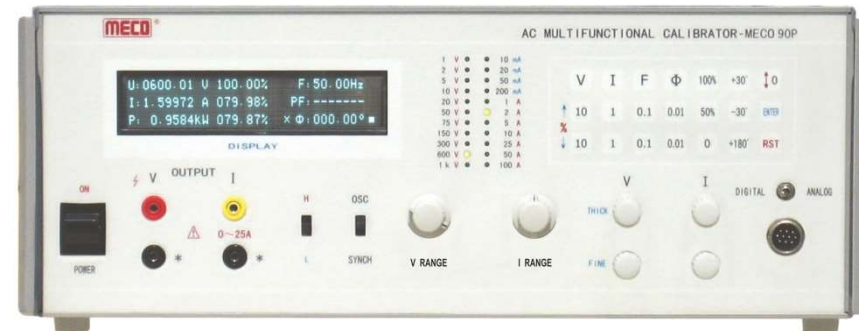
Calibrating Equipment



Universal Calibrator



Multifunctional Calibrator



AC Multifunctional Calibrator

Contact Us

Region	 	
North India & Goa	+91-93244 11558	ni1@mecoinst.com ni2@mecoinst.com
South India	+91-93242 89268	si1@mecoinst.com si2@mecoinst.com
East India, M.P. & Gujarat	+91-93244 05281	emg1@mecoinst.com emg2@mecoinst.com
Maharashtra	+91-93720 11735	mh1@mecoinst.com