



Products for HVAC

- ✓ Digital Earth Resistance Tester
- ✓ Multifunction Meters
- ✓ Powerguard
- ✓ Power Line Transducers
- ✓ Digital Multimeters
- ✓ Digital Clampmeters
- ✓ Insulation Testers
- ✓ Testing & Measuring Instruments
- ✓ Infrared Thermometer
- ✓ Environmental Testing Instruments
- ✓ Thermal Imaging Camera
- ✓ Clamp-On TRMS Power Meter

+60 YEARS
ONE MISSION



Reliable



Long-Lasting



Affordable

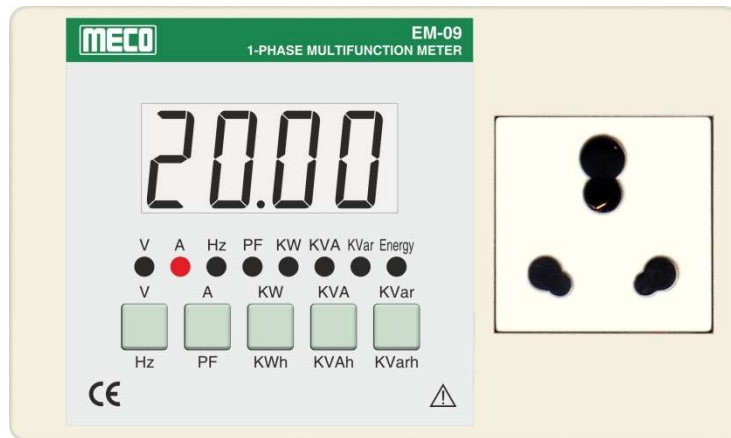
Digital Earth Resistance Tester



- ✓ 3½ Digit / 1999 Counts LCD
- ✓ Re-Chargeable Batteries
- ✓ Designed to Reject High Levels of Noise & Interference
- ✓ Range Selection & Single Person Operation
- ✓ Low Battery Indication
- ✓ IEC 1010 CAT III 200V
- ✓ Designed to Generally Conform to IS 10656-1983
- ✓ Capable of Measuring Earth Voltage (0 - 10V AC)

MECO DET 909 is Designed with Technical Know from FUSO Electric Company of Japan.

1 Phase Multifunction Appliance Meter - TRMS



- ✓ 4 Digit LCD Display with Backlight
- ✓ TRMS Measurement
- ✓ 10 Parameters on 10 Display Pages
- ✓ Measures V, A, PF, Hz, KW, KVA, KVar, KWh, KVAh & KVarh
- ✓ LED Indicator for Parameter Indication
- ✓ Power Master Software
- ✓ RS485 Port, 5KV Isolated with MODBUS RTU Protocol
- ✓ Auto / Manual Scroll Display

POWERGUARD

MECO supports
Bureau
of Energy Efficiency
(BEE), Govt. of
India's mission
to institutionalize
certification of
Electric / Electronic
goods for **ECOMARK**
under
Gazette of India



- ✓ Three Pin Socket & Plug Suitable for Indian Socket
- ✓ W (0.2 - 2200W)
- ✓ Measures V, mA, W, PF, CO₂ in Kg, Total Usage
Time, Money, Tariff, Hz, Timer & KWh
- ✓ TRMS V (195 - 265V AC)
- ✓ TRMS mA (Upto 10000mA max.)
- ✓ Memory Retention
- ✓ Built - In Programmable ON / OFF Relay

POWERGUARD -TRMS

MECO supports
Bureau
of Energy Efficiency
(BEE), Govt. of
India's mission
to institutionalize
certification of
Electric / Electronic
goods for **ECOMARK**
under
Gazette of India



- ✓ Three Pin Socket & Plug Suitable for Indian Socket
- ✓ Active Power (0.026 - 4.800KW)
- ✓ Measures V, A, KW, PF, CO₂ in Kg, Hz & KWh
- ✓ TRMS V (195 - 265V AC)
- ✓ TRMS A (0.110 - 20.00A AC)
- ✓ Apparent Power (KVA)
- ✓ Reactive Power (KVAr)
- ✓ Energy Usage Time (EUT)

POWER LINE TRANSDUCERS

CE



- ✓ Low Ripple in Output Signal
- ✓ Choice of Multiple Asymmetrical Outputs
- ✓ Wide Choices of Suppressed Ranges
- ✓ Open and Short Circuit Protection for Outputs
- ✓ Dual Output (Non-Isolated)
- ✓ Self-Powered, AC, DC, SMPS Auxilliary Supply
- ✓ Bi-Directional Outputs
- ✓ Fast Response Time
- ✓ Bi-Directional Inputs for Import / Export

3⁵/₆ Digit 6000 Counts TRMS Autoranging Digital Multimeter

CE



- ✓ 1000V DC & 750V AC
- ✓ 10A DC / AC
- ✓ Holster + Magnet
- ✓ Torch Light + Backlight
- ✓ Temperature (K Type Thermocouple)
- ✓ Frequency, Capacitance & Duty Cycle
- ✓ NCV (LED, Buzzer & EF Strength)
- ✓ Diode Test, Data Hold
- ✓ Audible Continuity
- ✓ Auto Power Off

3½ Digit 2000 Counts 600A AC – TRMS Digital Clampmeter

CE



- ✓ 600A AC
- ✓ 600V AC / DC
- ✓ Max Function
- ✓ Auto Ranging
- ✓ Resistance
- ✓ NCV (LED, Buzzer & EF Strength)
- ✓ Torch Light + Backlight
- ✓ Data Hold
- ✓ Auto Power Off

3½ Digit 6000 Counts 600A DC / AC – TRMS Digital Clampmeter

CE



- ✓ 600V & 600A DC / AC
- ✓ Resistance, Capacitance, Frequency
- ✓ Temperature (K Type Thermocouple)
- ✓ NCV (LED, Buzzer & EF Strength)
- ✓ Torch Light + Backlight
- ✓ Duty Cycle
- ✓ Diode Test, Audible Continuity
- ✓ Data Hold
- ✓ Auto Power Off

Analog Insulation Tester

CE

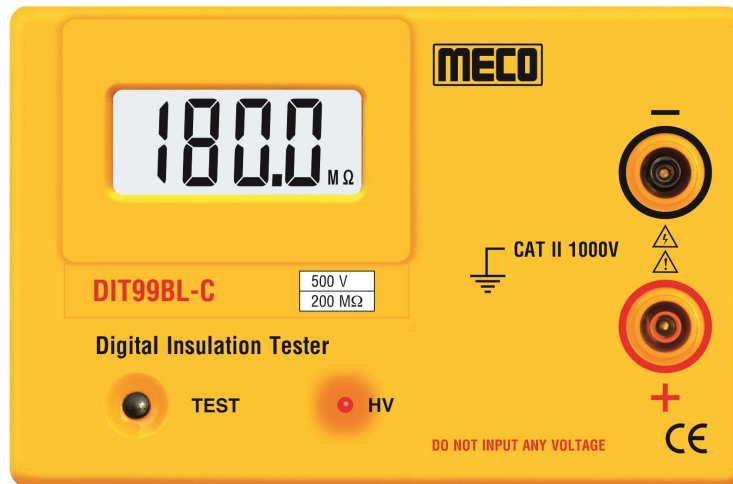


- ✓ Single Person Push Button Operation
- ✓ Meets IEC 61010, CAT II
- ✓ Designed As Per IS 10656-1983
- ✓ Battery Adaptor (Optional - BA Series)

Model	Range	Test Voltage DC
MC-901	0 - 20 MΩ	100V
MC-903	0 - 100 MΩ	500V
MC-904	0 - 500 MΩ	500V
MC-941	0 - 1000 MΩ	500V
MC-906	0 - 200 MΩ	1000V
MC-907	0 - 500 MΩ	1000V
MC-981	0 - 2000 MΩ	1000V

Digital Insulation Tester

CE



- ✓ Single Person Push Button Operation
- ✓ Meets IEC 61010, CAT II
- ✓ Designed As Per IS 10656-1983
- ✓ Battery Adaptor (Optional - BA Series)

Model	Range	Test Voltage DC
DIT99BL - A	0 - 20 MΩ	100V
DIT99BL - B	0 - 200 MΩ	500V
DIT99BL - C	0 - 200 MΩ	500V
DIT99BL - D	0 - 200 MΩ	500V
DIT99BL - E	0 - 2000 MΩ	1000V

2.5kV - 20G Ohms Digital Insulation Tester

CE



- ✓ 500V - 1000V - 2.5kV / 0.1M Ohm To 20G Ohm
- ✓ Single Person Push Button Operation
- ✓ 600V AC Voltage Measurement
- ✓ Auto Range (Insulation Test)
- ✓ Red LED Indicator for High Voltage
- ✓ Low Battery Indication / Low Resistance Warning
- ✓ IS 10656-1983 and EMC IEC 61326 Class B
- ✓ CAT III 600V, IEC / EN 61010-1 & 61010-31

5kV - 200G Ohms Digital Insulation Tester

CE



- ✓ 1000V - 2.5kV - 5kV / 0.1M Ohm To 200G Ohm
- ✓ 600V AC Voltage Measurement
- ✓ Red LED Indicator for High Voltage
- ✓ Phase Sequence, Phase Status Indication and Beep Facility
- ✓ Protection to Prevent the Harm of Reverse Voltage
- ✓ Over Range Indication
- ✓ Battery Operated with AC Adaptor
- ✓ IS 10656-1983 and EMC IEC 61326 Class B
- ✓ CAT III 600V, IEC / EN 61010-1 & 61010-31

Clamp - On Earth / Ground Resistance and Leakage Current Tester

CE



- ✓ Non Contact Ground Resistance Measurement
- ✓ 4 Digit 9999 Counts LCD Backlight Display
- ✓ No Auxilliary Electrodes Needed
- ✓ Ground Resistance Measurement 0.01Ω ~ 1000Ω
- ✓ Leakage Current (0.5mA ~ 30.00A) (Model 4680BLC)
- ✓ Data Storage Memory
- ✓ Data Hold, Noise Signal, Auto Power Off
- ✓ Suitable for Earthing Strip Upto 65mm
- ✓ Suitable for Round Conductor Upto 25mm Dia.

LCR Meter



- ✓ Measures L, C, R, Z, D, Q, θ and ESR
- ✓ Signal Frequency 100Hz, 120Hz, 1KHz & 10KHz
- ✓ Automatic Identification Function (Ai)
- ✓ Test Terminals 2, 4 & 5 Terminals
- ✓ Automatic Correction Function with Data Hold / Max / Min / Average Recording
- ✓ Series & Parallel Modes, Short & Open Correction
- ✓ Holster and Backlight
- ✓ USB Interface with Software
- ✓ Rechargeable Battery and AC Adaptor

Micro - Ohmmeter (7272) / Milli - Ohmmeter (7002)



- ✓ Four Terminal Kelvin Measurement
- ✓ Measurement of Resistive and Inductive Materials
- ✓ Test Current : 10A (60mΩ) for 7272, 5A (120mΩ) for 7002
- ✓ Cable Length Measurement in feet & meters
- ✓ Large LCD with Backlight & Data Hold Function
- ✓ Manual / Auto Range
- ✓ Memory for 3000 Measurements Data
- ✓ Rechargeable Batteries with AC Adaptor
- ✓ RS232 - USB Bridge Cable with Software

Phase Sequence Indicator

CE



- ✓ 3 Phase Sequence Indication (LED & Buzzer)
- ✓ Reverse Phase Indication (LED & Buzzer)
- ✓ Open Phase Indication (LED & Buzzer)
- ✓ Handy, Rugged & Self Powered
- ✓ R, Y & B Heavy Duty Probes
- ✓ Insulated Crocodile Clips for Safe Connection
- ✓ Voltage Range 100 ~ 600V AC (PH-PH)
- ✓ Frequency Range 40 ~ 400Hz
- ✓ No Battery Required
- ✓ Easy & Safe to Use

Non - Contact Voltage Detector

CE



- ✓ Voltage Range 90 ~ 1000V AC
- ✓ High Pitch Buzzer
- ✓ Fixed Sensitivity
- ✓ Red LED Light Warning
- ✓ Pen Pointer Electric Torch
- ✓ CAT III 1000V
- ✓ Safety Standard Pollution Degree 2
- ✓ Battery Operated
- ✓ Auto Power Off

Inverter Analyzer



- ✓ Helps to Diagnose Fault in Inverter Based Products
- ✓ 60 ~ 600V AC, 40 ~ 400Hz (Max. for 5 Min)
- ✓ No Battery Required
- ✓ Rugged, Handy, Easy and Safe to Use
- ✓ Color Identified Test Probes with Insulated Crocodile Clips for R, Y, B Connections
- ✓ LED Based Instant Diagnosis

Industrial Infrared Thermometers

CE



- ✓ Temperature : -50°C ~ 600°C / -50°F ~ 1112°F
- ✓ °C / °F Selection
- ✓ Laser Switch
- ✓ Low Battery Indication
- ✓ Backlight Display
- ✓ MAX / MIN / DIF / AVG Function
- ✓ Data Storage
- ✓ High / Low Temperature Alarm Setting Function
- ✓ Auto Power Off

Laser Distance Meter



- ✓ 0.05 To 100m
- ✓ Meter / Inches / Feet
- ✓ Addition / Substraction
- ✓ Area / Volume Calculation
- ✓ Triangular Area Measurement
- ✓ Pythagorean
- ✓ Data Storage
- ✓ MIN / MAX / Continuous Measurement
- ✓ Battery Indicator

Humidity & Temperature Meter

CE



- ✓ Humidity : 0 ~ 100% RH
- ✓ Temperature : - 20 ~ 80°C / - 4 ~ 176°F
- ✓ °C / °F / RH Selection
- ✓ MAX / MIN
- ✓ 9V Battery (installed)
- ✓ Auto Power Off

Air Flow Anemometer

CE



- ✓ Air Flow : 1 ~ 25m/s
- ✓ Temperature : 0 ~ 50°C / 32 ~ 122°F
- ✓ m / Sec, Ft / min, Knots, Km / h, MPH, CFM
- ✓ MAX / MIN / HOLD
- ✓ Backlight
- ✓ 9V Battery (installed)
- ✓ Auto Power Off

Digital Sound Level Meter

CE



- ✓ Range : 35dB ~ 130dB (31.5Hz ~ 8KHz)
- ✓ MAX
- ✓ MIN
- ✓ HOLD
- ✓ Auto Power Off

Digital LUX Meter

CE



- ✓ Range : 0 ~ 200,000 lux / 0 ~ 20,000 fc
- ✓ Selection of lux / fc
- ✓ Max / Min
- ✓ Data Hold
- ✓ Backlight
- ✓ 9V Battery (installed)
- ✓ Auto Power Off

Digital LUX Meter with Flexible Sensor

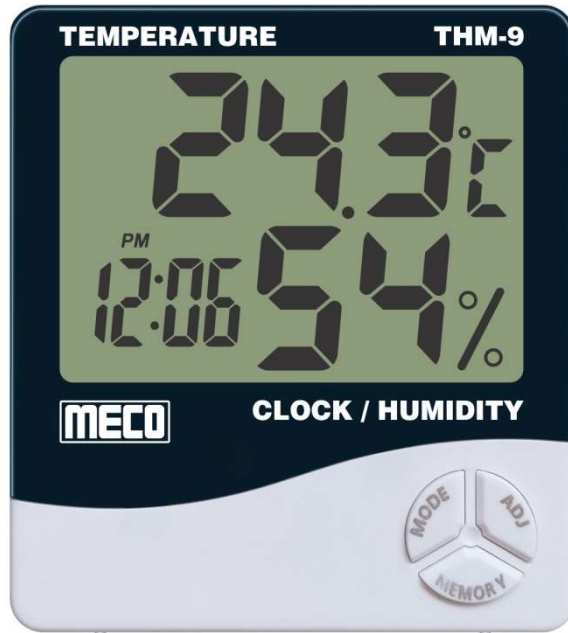


- ✓ 0.1 ~ 200,000 lux / 0.0 ~ 20,000 fc
- ✓ Selection of lux / fc
- ✓ MAX
- ✓ MIN
- ✓ Backlight
- ✓ Data Hold
- ✓ Auto Power Off with Disable Feature
- ✓ Flexible Sensor for convenience of Testing

Temperature & Humidity Meter (with Clock & Calendar)



CE



- ✓ Range : -10°C ~ 50°C / 14°F ~ 122°F
- ✓ °C / °F Selection
- ✓ MAX / MIN
- ✓ Integral Hour Alarm
- ✓ Clock & Calendar
- ✓ Display : Temperature, Humidity and Time
Simultaneously

Thermal Imaging Camera

CE



- ✓ 2.4" Color Display
- ✓ Infrared Image Resolution : 60 x 60
- ✓ Total Pixels : 3600, File Format : BMP
- ✓ Temp. Range : -20°C ~ 300°C / -4°F ~ 572°F
- ✓ Wavelength Range : 8 ~ 14μm
- ✓ Storage : Micro SD Card (4 GB)
- ✓ Image Capturing Frequency : 6Hz
- ✓ Palette : Iron Color, Rainbow High Contrast, Gray Scale (Black Glow) & White Scale (White Glow)

Clamp-On TRMS Power Meter (1000A, 600kW)

CE



- ✓ 1 ϕ and 3 ϕ (3 ϕ 3W / 3 ϕ 4W) Power Analyzer
- ✓ 4 Digit 9999 Counts LCD
- ✓ TRUE Power, AC Inrush Current, Phase Angle
- ✓ Dual Display, Autoranging
- ✓ HP, KW, KVA, KVAR, HZ, PF, AC A, AC / DC V
- ✓ Resistance, Capacitance, Temperature
- ✓ Diode Test, Data Hold, Auto Power Off
- ✓ Jaw Opening Cable / Conductor Upto 43mm / Bus Bar Upto 65 x 16mm

Contact Us

Region	 	
North India & Goa	+91-93244 11558	ni1@mecoinst.com ni2@mecoinst.com
South India	+91-93242 89268	si1@mecoinst.com si2@mecoinst.com
East India, M.P. & Gujarat	+91-93244 05281	emg1@mecoinst.com emg2@mecoinst.com
Maharashtra	+91-93720 11735	mh1@mecoinst.com