



Products for Defence

- ✓ Power Line Transducers
- ✓ Analog Panel Meters
- ✓ Digital Panel Meters
- ✓ Digital Multimeters
- ✓ Digital Clampmeters
- ✓ Digital Insulation Testers
- ✓ Testing & Measuring Instruments
- ✓ Power & Harmonics Analyzer
- ✓ Thermal Imaging Camera

+60 YEARS
ONE MISSION



Reliable



Long-Lasting



Affordable

POWER LINE TRANSDUCERS

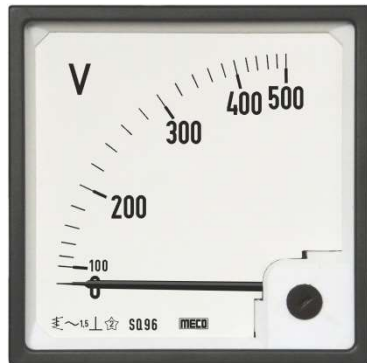
CE



- ✓ Low Ripple in Output Signal
- ✓ Choice of Multiple Asymmetrical Outputs
- ✓ Wide Choices of Suppressed Ranges
- ✓ Open and Short Circuit Protection for Outputs
- ✓ Dual Output (Non-Isolated)
- ✓ Self-Powered, AC, DC, SMPS Auxilliary Supply
- ✓ Bi-Directional Outputs
- ✓ Fast Response Time
- ✓ Bi-Directional Inputs for Import / Export

ANALOG PANEL METERS

CE



- ✓ AC Moving Iron Meters
- ✓ DC Moving Coil Meters
- ✓ AC Moving Coil Rectifier Type Meters
- ✓ Electronic Type W / VAR / PF / Hz Meters
- ✓ Rectangular AC & DC Meters
- ✓ Standard : IS1248
- ✓ Deflection : 90°C & 240°C
- ✓ Size (mm) : 72 x 72, 96 x 96, 144 x 144 & 110 x 110

4 Digit Programmable Ammeter / Voltmeter - TRMS

CE



- ✓ 4 Digit 9999 Counts Super Bright Display
- ✓ TRMS Using Microcontroller
- ✓ User Programmable Display (CT Primary / PTR / Shunt Value]
- ✓ Auto Selection of Decimal Point
- ✓ Over Range Indication
- ✓ 85-265V AC/DC or 48V DC Auxilliary Supply
- ✓ Accuracy $\pm 0.5\%$ of FSD
- ✓ Size (mm) : 72 x 72, 48 x 96 & 96 x 96

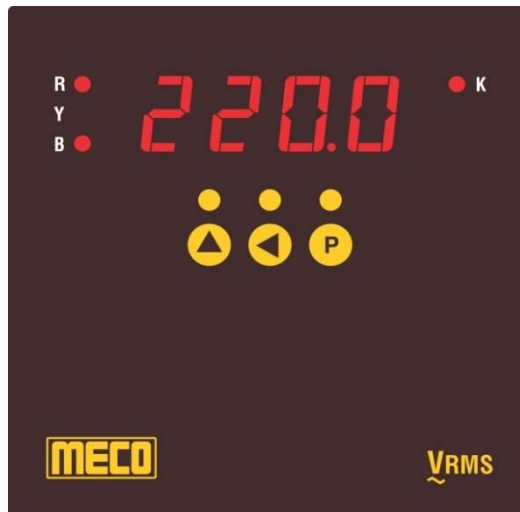
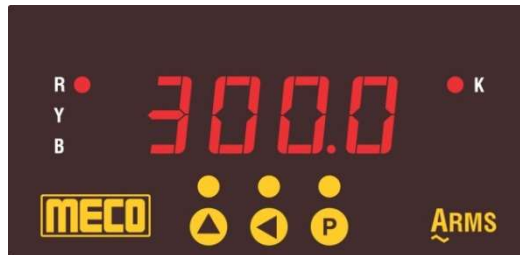
4 Digit Programmable Ammeter / Voltmeter - TRMS (Professional Series)



- ✓ 4 Digit 9999 Counts Red LED Super Bright Display
- ✓ TRMS Using Microcontroller
- ✓ User Programmable Display (CT Primary / PTR / Shunt Value)
- ✓ Auto Selection of Decimal Point
- ✓ Over Range Indication
- ✓ 85-265V AC/DC or 19-90V AC/DC Auxilliary Supply
- ✓ Accuracy $\pm 0.5\%$ of FSD
- ✓ Size (mm) : 48 x 96 & 96 x 96

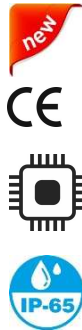
3 Phase 4 Digit Programmable Ammeter / Voltmeter - TRMS

CE



- ✓ 4 Digit 9999 Counts Red LED Super Bright Display
- ✓ TRMS Using Microcontroller
- ✓ 1A / 5A Input in Same Meter (User Selectable)
- ✓ 3P3W / 3P4W User Selectable
- ✓ Auto / Manual Scroll Display (User Selectable)
- ✓ Auto Selection of Decimal Point
- ✓ 85 - 265V AC/DC or 19 - 90V AC/DC Auxilliary Supply
- ✓ Accuracy $\pm(0.5\% \text{ FSD} + 2 \text{ digits})$
- ✓ Size (mm) : 48 x 96 & 96 x 96

4 Digit Triple Range Programmable Process Indicator with IP-65 Protection



- ✓ Protection Level IP65 on Front (**Optional**)
- ✓ User Programmable 3 Input Ranges In One Meter
- ✓ Input : 4-20mA, 0-20mA & 0-10V DC
- ✓ 4 Digit 9999 Counts LED Display
- ✓ Programmable Display -1999 to 9999
- ✓ Decimal Point Selectable
- ✓ Overload Indication
- ✓ 85-265V AC/DC or 19-90V AC/DC Auxilliary Supply
- ✓ Accuracy $\pm 0.5\%$ of FSD
- ✓ Size (mm) : 48 x 96

4 Digit Digital Frequency Meter

CE



- ✓ 4 Digit 9999 Counts Red LED Display
- ✓ Interval Measurement Method using Microcontroller
- ✓ Wide Range 40 ~ 5000Hz (FDM4S & FDM964S)
- ✓ High Accuracy Across the Entire Range
- ✓ Auto Selection of Decimal Point
- ✓ Red Antiglare Faceplate with Annunciator
- ✓ Size (mm) : 48 x 96, 96 x 96, 72 x 144 & 144 x 144

LCD / LED Modules



- ✓ 3½ Digit 1999 Counts & 4½ Digit 19999 Counts Display
- ✓ Resolution is 0.0001 to 1 Count Depending on Ranges
- ✓ Over Range Indication "1" or "-1"
- ✓ Decimal Point : Field Selectable
- ✓ 5V DC ± 10% Auxilliary Supply for GM135 & LC135 (LED Modules)
- ✓ 9V DC ± 10% Auxilliary Supply for GM035, DH035, GM035-BL, GM045 & LC035 (LCD Modules)

3⁵/₆ Digit 6000 Counts TRMS Autoranging Digital Multimeter

CE



- ✓ 1000V DC & 750V AC
- ✓ 20A DC / AC
- ✓ Holster with Stand
- ✓ Temperature (K Type Thermocouple)
- ✓ Frequency, Capacitance, Resistance & Duty Cycle
- ✓ Diode Test, Audible Continuity, Data Hold
- ✓ Backlight, Auto Power Off
- ✓ CAT IV 600V, CAT III 1000V

3⁵/₆ Digit 6000 Counts 1000A AC - TRMS Digital Clampmeter

CE



- ✓ 1000A AC
- ✓ 1000V DC & 750V AC
- ✓ Resistance, Capacitance & Frequency
- ✓ Temperature (K Type Thermocouple)
- ✓ Duty Cycle, Diode Test & Data Hold
- ✓ Auto / Manual Ranging
- ✓ Micro Amp Measurement for HVAC Flame Sensors

3³/₄ Digit 4200 Counts 1200A DC / 1000A AC - TRMS Digital Clampmeter

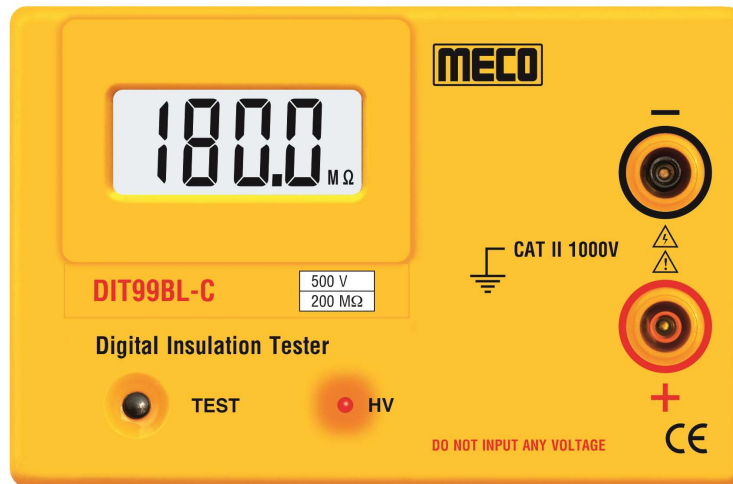
CE



- ✓ 1200A DC / 1000A AC
- ✓ 1000V DC / 750V AC
- ✓ Resistance, Capacitance & Frequency
- ✓ Temperature (K Type Thermocouple)
- ✓ MAX / MIN, Δ REL, Data Hold, Diode Test
- ✓ Audible Continuity, Duty Cycle
- ✓ Auto Power Off

Digital Insulation Tester

CE



- ✓ Single Person Push Button Operation
- ✓ Meets IEC 61010, CAT II
- ✓ Designed As Per IS 10656-1983
- ✓ Battery Adaptor (Optional - BA Series)

Model	Range	Test Voltage DC
DIT99BL - A	0 - 20 MΩ	100V
DIT99BL - B	0 - 200 MΩ	500V
DIT99BL - C	0 - 200 MΩ	500V
DIT99BL - D	0 - 200 MΩ	500V
DIT99BL - E	0 - 2000 MΩ	1000V

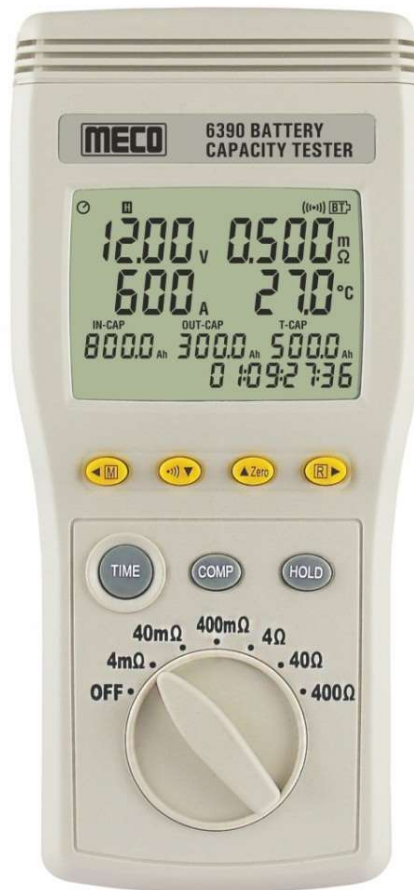
5kV - 200G Ohms Digital Insulation Tester

CE



- ✓ 1000V - 2.5kV - 5kV / 0.1M Ohm To 200G Ohm
- ✓ 600V AC Voltage Measurement
- ✓ Red LED Indicator for High Voltage
- ✓ Phase Sequence, Phase Status Indication and Beep Facility
- ✓ Protection to Prevent the Harm of Reverse Voltage
- ✓ Over Range Indication
- ✓ Battery Operated with AC Adaptor
- ✓ IS 10656-1983 and EMC IEC 61326 Class B
- ✓ CAT III 600V, IEC / EN 61010-1 & 61010-31

Battery Capacity (Impedence) Tester with DC Adaptor Upto 1200Ah



- ✓ Upto 1200Ah & 60V DC
- ✓ 4mΩ to 400Ω Internal Resistance
- ✓ Upto 600A DC Current
- ✓ Rates Conditions as PASS / WARNING / FAIL
- ✓ Load Test Analysis (Charge / Discharge)
- ✓ Built - In Comparator Function
- ✓ Auto Datalogging Micro SD Card
- ✓ USB Interface & Software
- ✓ Memory & Read Function
- ✓ Online Testing without Shutting Down Battery

Laser Distance Meter



- ✓ 0.05 To 100m
- ✓ Meter / Inches / Feet
- ✓ Addition / Subtraction
- ✓ Area / Volume Calculation
- ✓ Triangular Area Measurement
- ✓ Pythagorean
- ✓ Data Storage
- ✓ MIN / MAX / Continuous Measurement
- ✓ Battery Indicator

Thermal Imaging Camera

CE



- ✓ 2.4" Color Display
- ✓ Infrared Image Resolution : 60 x 60
- ✓ Total Pixels : 3600, File Format : BMP
- ✓ Temp. Range : -20°C ~ 300°C / -4°F ~ 572°F
- ✓ Wavelength Range : 8 ~ 14μm
- ✓ Storage : Micro SD Card (4 GB)
- ✓ Image Capturing Frequency : 6Hz
- ✓ Palette : Iron Color, Rainbow High Contrast, Gray Scale (Black Glow) & White Scale (White Glow)

Power and Harmonics Analyzer



- ✓ Analysis of 3P4W, 3P3W, 1P2W & 1P3W Systems
- ✓ Display of 35 Parameters in One Screen (3P4W)
- ✓ Programmable CT (1 to 600) and PT (1 to 3000) Ratio
- ✓ Graphic Phasor Diagram, RS-232C-USB Interface
- ✓ TRUE RMS Value, Active Power, Apparent & Reactive Power (KVA, KVAR)
- ✓ RMS, Peak Value and Crest Factor
- ✓ Average/Maximum Demand (KW, MW, KVA, MVA)
- ✓ Analysis of Total Harmonic Distortion (THD-F)

3 Phase / 1 Phase TRMS Clamp-On Power Meter for AC / DC Power

CE



- ✓ 3φ3W, 3φ4W, 1φ2W, 1φ3W Power Analyzer
- ✓ TRMS Values, Autoranging
- ✓ 2 x 4 Digits Dual Display LCD
- ✓ AC / DC Power Measurement (2000A, 2000kW)
- ✓ Power Factor , Phase Angle, Frequency
- ✓ Memory for Recording
- ✓ Low Battery & Overload Indication
- ✓ Jaw Opening Cable of 55mm Dia. / Bus Bar 65 x 24mm

Contact Us

Region	 	
North India & Goa	+91-93244 11558	ni1@mecoinst.com ni2@mecoinst.com
South India	+91-93242 89268	si1@mecoinst.com si2@mecoinst.com
East India, M.P. & Gujarat	+91-93244 05281	emg1@mecoinst.com emg2@mecoinst.com
Maharashtra	+91-93720 11735	mh1@mecoinst.com