



Products for Cement And Steel

- ✓ Digital Earth Resistance Tester
- ✓ Power Line Transducers
- ✓ Analog Panel Meters
- ✓ Digital Panel Meters
- ✓ Digital Multimeters
- ✓ Digital Clampmeters
- ✓ Insulation Testers
- ✓ Testing & Measuring Instruments
- ✓ Power & Harmonics Analyzer
- ✓ Infrared Thermometer

+60 YEARS
ONE MISSION



Reliable



Long-Lasting



Affordable

Digital Earth Resistance Tester



- ✓ 3½ Digit / 1999 Counts LCD
- ✓ Re-Chargeable Batteries
- ✓ Designed to Reject High Levels of Noise & Interference
- ✓ Range Selection & Single Person Operation
- ✓ Low Battery Indication
- ✓ IEC 1010 CAT III 200V
- ✓ Designed to Generally Conform to IS 10656-1983
- ✓ Capable of Measuring Earth Voltage (0 - 10V AC)

MECO DET 909 is Designed with Technical Know from FUSO Electric Company of Japan.

POWER LINE TRANSDUCERS

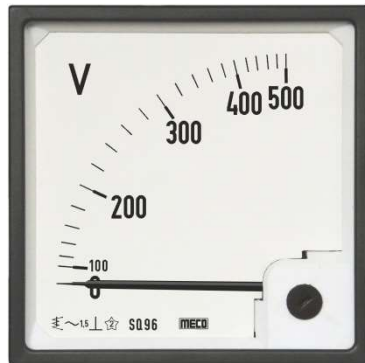
CE



- ✓ Low Ripple in Output Signal
- ✓ Choice of Multiple Asymmetrical Outputs
- ✓ Wide Choices of Suppressed Ranges
- ✓ Open and Short Circuit Protection for Outputs
- ✓ Dual Output (Non-Isolated)
- ✓ Self-Powered, AC, DC, SMPS Auxilliary Supply
- ✓ Bi-Directional Outputs
- ✓ Fast Response Time
- ✓ Bi-Directional Inputs for Import / Export

ANALOG PANEL METERS

CE



- ✓ AC Moving Iron Meters
- ✓ DC Moving Coil Meters
- ✓ AC Moving Coil Rectifier Type Meters
- ✓ Electronic Type W / VAR / PF / Hz Meters
- ✓ Rectangular AC & DC Meters
- ✓ Standard : IS1248
- ✓ Deflection : 90°C & 240°C
- ✓ Size (mm) : 72 x 72, 96 x 96, 144 x 144 & 110 x 110

4 Digit Programmable Ammeter / Voltmeter - TRMS

CE



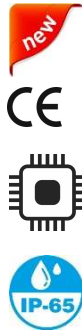
- ✓ 4 Digit 9999 Counts Super Bright Display
- ✓ TRMS Using Microcontroller
- ✓ User Programmable Display (CT Primary / PTR / Shunt Value]
- ✓ Auto Selection of Decimal Point
- ✓ Over Range Indication
- ✓ 85-265V AC/DC or 48V DC Auxilliary Supply
- ✓ Accuracy $\pm 0.5\%$ of FSD
- ✓ Size (mm) : 72 x 72, 48 x 96 & 96 x 96

4 Digit Programmable Ammeter / Voltmeter - TRMS (Professional Series)



- ✓ 4 Digit 9999 Counts Red LED Super Bright Display
- ✓ TRMS Using Microcontroller
- ✓ User Programmable Display (CT Primary / PTR / Shunt Value)
- ✓ Auto Selection of Decimal Point
- ✓ Over Range Indication
- ✓ 85-265V AC/DC or 19-90V AC/DC Auxilliary Supply
- ✓ Accuracy $\pm 0.5\%$ of FSD
- ✓ Size (mm) : 48 x 96 & 96 x 96

4 Digit Triple Range Programmable Process Indicator with IP-65 Protection



- ✓ Protection Level IP65 on Front (**Optional**)
- ✓ User Programmable 3 Input Ranges In One Meter
- ✓ Input : 4-20mA, 0-20mA & 0-10V DC
- ✓ 4 Digit 9999 Counts LED Display
- ✓ Programmable Display -1999 to 9999
- ✓ Decimal Point Selectable
- ✓ Overload Indication
- ✓ 85-265V AC/DC or 19-90V AC/DC Auxilliary Supply
- ✓ Accuracy $\pm 0.5\%$ of FSD
- ✓ Size (mm) : 48 x 96

4 Digit Digital Frequency Meter

CE



- ✓ 4 Digit 9999 Counts Red LED Display
- ✓ Interval Measurement Method using Microcontroller
- ✓ Wide Range 40 ~ 5000Hz (FDM4S & FDM964S)
- ✓ High Accuracy Across the Entire Range
- ✓ Auto Selection of Decimal Point
- ✓ Red Antiglare Faceplate with Annunciator
- ✓ Size (mm) : 48 x 96, 96 x 96, 72 x 144 & 144 x 144

3⁵/₆ Digit 6000 Counts TRMS Autoranging Digital Multimeter

CE



- ✓ 1000V DC & 750V AC
- ✓ 10A DC / AC
- ✓ Holster + Magnet
- ✓ Torch Light + Backlight
- ✓ Temperature (K Type Thermocouple)
- ✓ Frequency, Capacitance & Duty Cycle
- ✓ NCV (LED, Buzzer & EF Strength)
- ✓ Diode Test, Data Hold
- ✓ Audible Continuity
- ✓ Auto Power Off

3⁵/₆ Digit 6000 Counts TRMS Autoranging Digital Multimeter

CE



- ✓ 1000V DC & 750V AC
- ✓ 20A DC / AC
- ✓ Holster with Stand
- ✓ Temperature (K Type Thermocouple)
- ✓ Frequency, Capacitance, Resistance & Duty Cycle
- ✓ Diode Test, Audible Continuity, Data Hold
- ✓ Backlight, Auto Power Off
- ✓ CAT IV 600V, CAT III 1000V

3½ Digit 2000 Counts 600A AC – TRMS Digital Clampmeter

CE



- ✓ 600A AC
- ✓ 600V AC / DC
- ✓ Max Function
- ✓ Auto Ranging
- ✓ Resistance
- ✓ NCV (LED, Buzzer & EF Strength)
- ✓ Torch Light + Backlight
- ✓ Data Hold
- ✓ Auto Power Off

3³/₄ Digit 4200 Counts 1200A DC / 1000A AC - TRMS Digital Clampmeter

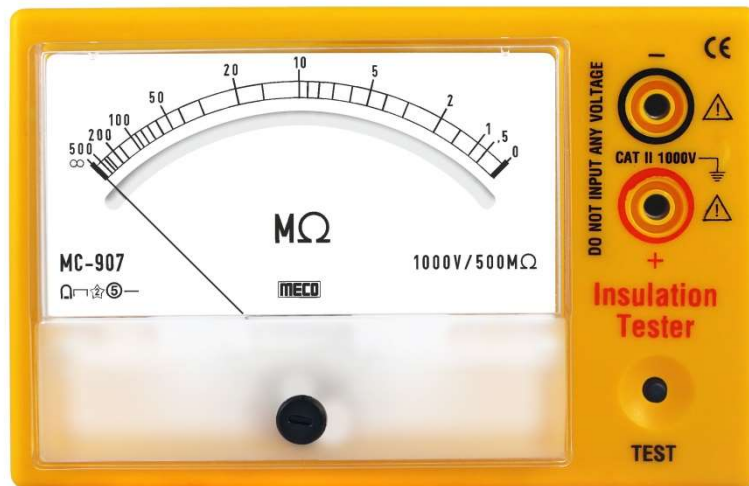
CE



- ✓ 1200A DC / 1000A AC
- ✓ 1000V DC / 750V AC
- ✓ Resistance, Capacitance & Frequency
- ✓ Temperature (K Type Thermocouple)
- ✓ MAX / MIN, Δ REL, Data Hold, Diode Test
- ✓ Audible Continuity, Duty Cycle
- ✓ Auto Power Off

Analog Insulation Tester

CE



- ✓ Single Person Push Button Operation
- ✓ Meets IEC 61010, CAT II
- ✓ Designed As Per IS 10656-1983
- ✓ Battery Adaptor (Optional - BA Series)

Model	Range	Test Voltage DC
MC-901	0 - 20 MΩ	100V
MC-903	0 - 100 MΩ	500V
MC-904	0 - 500 MΩ	500V
MC-941	0 - 1000 MΩ	500V
MC-906	0 - 200 MΩ	1000V
MC-907	0 - 500 MΩ	1000V
MC-981	0 - 2000 MΩ	1000V

Clamp - On Earth / Ground Resistance and Leakage Current Tester

CE



- ✓ Non Contact Ground Resistance Measurement
- ✓ 4 Digit 9999 Counts LCD Backlight Display
- ✓ No Auxilliary Electrodes Needed
- ✓ Ground Resistance Measurement 0.01Ω ~ 1000Ω
- ✓ Leakage Current (0.5mA ~ 30.00A) (Model 4680BLC)
- ✓ Data Storage Memory
- ✓ Data Hold, Noise Signal, Auto Power Off
- ✓ Suitable for Earthing Strip Upto 65mm
- ✓ Suitable for Round Conductor Upto 25mm Dia.

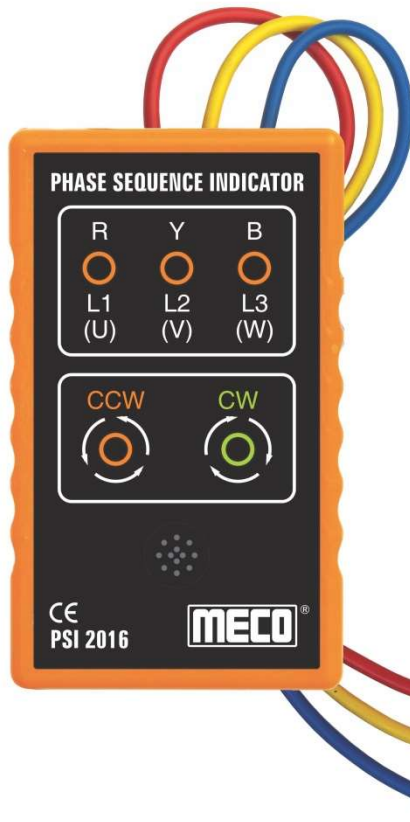
Micro - Ohmmeter (7272) / Milli - Ohmmeter (7002)



- ✓ Four Terminal Kelvin Measurement
- ✓ Measurement of Resistive and Inductive Materials
- ✓ Test Current : 10A (60mΩ) for 7272, 5A (120mΩ) for 7002
- ✓ Cable Length Measurement in feet & meters
- ✓ Large LCD with Backlight & Data Hold Function
- ✓ Manual / Auto Range
- ✓ Memory for 3000 Measurements Data
- ✓ Rechargeable Batteries with AC Adaptor
- ✓ RS232 - USB Bridge Cable with Software

Phase Sequence Indicator

CE



- ✓ 3 Phase Sequence Indication (LED & Buzzer)
- ✓ Reverse Phase Indication (LED & Buzzer)
- ✓ Open Phase Indication (LED & Buzzer)
- ✓ Handy, Rugged & Self Powered
- ✓ R, Y & B Heavy Duty Probes
- ✓ Insulated Crocodile Clips for Safe Connection
- ✓ Voltage Range 100 ~ 600V AC (PH-PH)
- ✓ Frequency Range 40 ~ 400Hz
- ✓ No Battery Required
- ✓ Easy & Safe to Use

Industrial Infrared Thermometer

CE



- ✓ Temperature Range: -50°C~1050°C / -58°F~1922°F
- ✓ Distance Spot Ratio 50 : 1
- ✓ °C / °F Selection
- ✓ Laser Switch
- ✓ Backlight Display
- ✓ Low Battery Indication
- ✓ MAX / MIN / DIF / AVG Function
- ✓ Data Storage
- ✓ High / Low Temperature Alarm Setting Function
- ✓ Auto Power Off

Power and Harmonics Analyzer



- ✓ Analysis of 3P4W, 3P3W, 1P2W & 1P3W Systems
- ✓ Display of 35 Parameters in One Screen (3P4W)
- ✓ Programmable CT (1 to 600) and PT (1 to 3000) Ratio
- ✓ Graphic Phasor Diagram, RS-232C-USB Interface
- ✓ TRUE RMS Value, Active Power, Apparent & Reactive Power (KVA, KVAR)
- ✓ RMS, Peak Value and Crest Factor
- ✓ Average/Maximum Demand (KW, MW, KVA, MVA)
- ✓ Analysis of Total Harmonic Distortion (THD-F)

Clamp-On TRMS Power Meter (1000A, 600kW)

CE



- ✓ 1 ϕ and 3 ϕ (3 ϕ 3W / 3 ϕ 4W) Power Analyzer
- ✓ 4 Digit 9999 Counts LCD
- ✓ TRUE Power, AC Inrush Current, Phase Angle
- ✓ Dual Display, Autoranging
- ✓ HP, KW, KVA, KVAR, HZ, PF, AC A, AC / DC V
- ✓ Resistance, Capacitance, Temperature
- ✓ Diode Test, Data Hold, Auto Power Off
- ✓ Jaw Opening Cable / Conductor Upto 43mm / Bus Bar Upto 65 x 16mm

Contact Us

Region	 	
North India & Goa	+91-93244 11558	ni1@mecoinst.com ni2@mecoinst.com
South India	+91-93242 89268	si1@mecoinst.com si2@mecoinst.com
East India, M.P. & Gujarat	+91-93244 05281	emg1@mecoinst.com emg2@mecoinst.com
Maharashtra	+91-93720 11735	mh1@mecoinst.com