



Products for Automation

- ✓ Multifunction Meters
- ✓ Power Line Transducers
- ✓ Analog Panel Meters
- ✓ Digital Panel Meters
- ✓ Modules
- ✓ Digital Multimeters
- ✓ Digital Clampmeters
- ✓ Testing & Measuring Instruments
- ✓ Power & Harmonics Analyzer
- ✓ Multifunction Process Calibrator

+60 YEARS
ONE MISSION



Reliable



Long-Lasting



Affordable

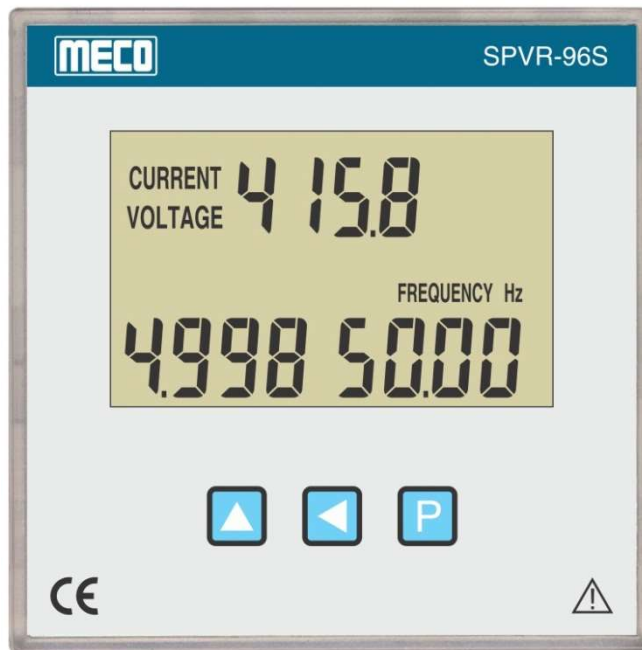
3 Phase Multifunction Power & Energy Meter - TRMS



- ✓ TRMS Measurement
- ✓ 4 Rows 4 Digit Super Bright LED Display
- ✓ 3P2E3W / 3P3E4W User Selectable
- ✓ Programmable for CTR, PTR, Instrument Address, Password & Energy Reset
- ✓ Energy Import - Export (4Q Operation)
- ✓ Energy Retention
- ✓ RS485 Port, 5KV Isolated with MODBUS RTU Protocol with Software
- ✓ 85-265V AC/DC or 19-90V AC/DC Auxilliary Supply

Click Here for Enquiry : https://www.mecoinst.com/contact-meco/enquiry-form.aspx?p_id=169

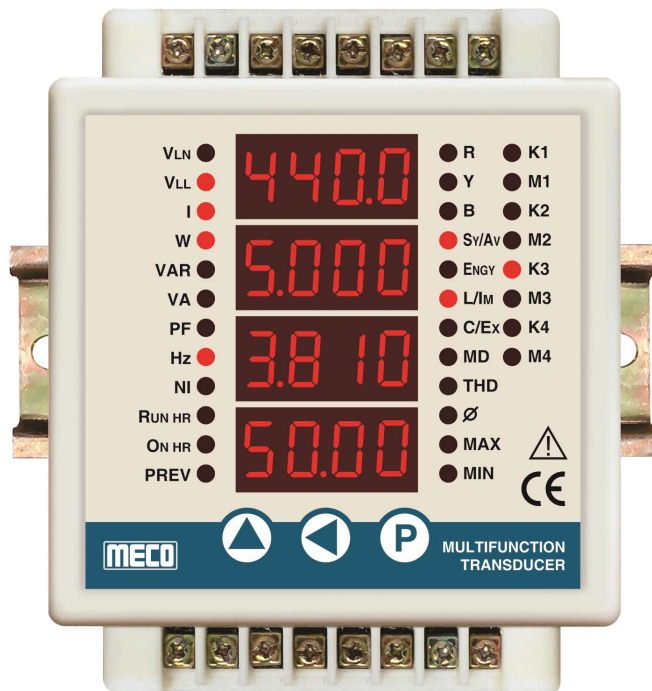
3 Phase Power Line Supervisor - TRMS



- ✓ 4 Digit LCD Display with Backlight
- ✓ 3P2E3W / 3P3E4W User Selectable
- ✓ Programmable for CTR, PTR, Instrument Address, Password & Energy Reset
- ✓ Energy Import - Export (4Q Operation)
- ✓ Energy Retention
- ✓ RS485 Port, 5KV Isolated with MODBUS RTU Protocol with Software
- ✓ Parameters Measured V, I, W, VAR, VA, Hz, PF, KWh, KVAh , KVA

Click Here for Enquiry : https://www.mecoinst.com/contact-meco/enquiry-form.aspx?p_id=169

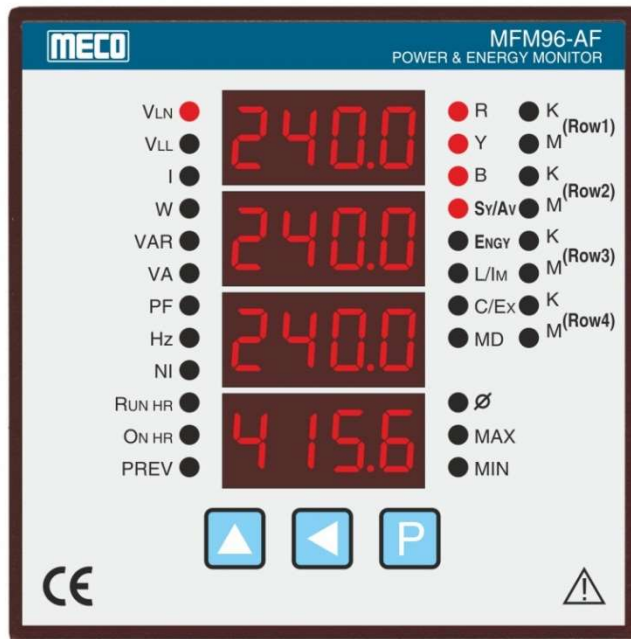
1 & 3 Phase Multifunction Power & Energy Transducer with MD & THD-TRMS



- ✓ DIN RAIL Mounting
- ✓ TRMS Measurement
- ✓ 4 Rows 4 Digit Super Bright LED Display
- ✓ 1P1E2W / 3P2E3W / 3P3E4W User Selectable
- ✓ Programmable for CTR, PTR, Instrument Address, Password & Energy Reset
- ✓ Energy Import - Export (4Q Operation)
- ✓ Energy Retention
- ✓ RS485 Port, 5KV Isolated with MODBUS RTU Protocol with Software

Click Here for Enquiry : https://www.mecoinst.com/contact-meco/enquiry-form.aspx?p_id=290

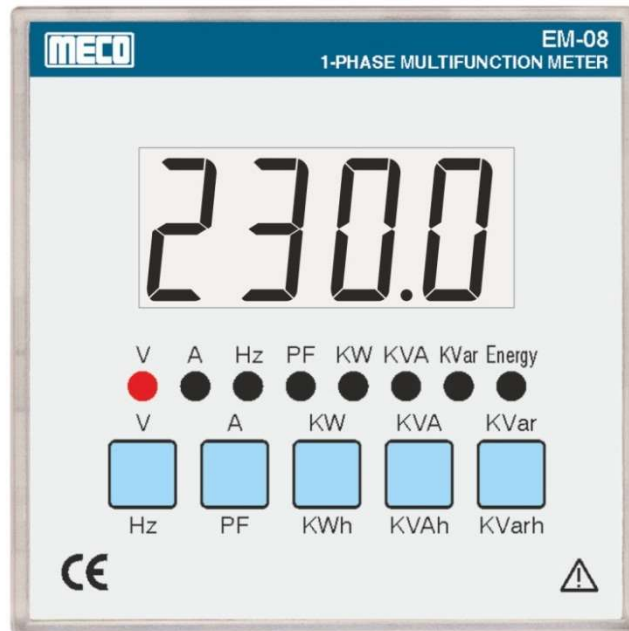
3 Phase Multifunction Power & Energy Meter with MD - TRMS



- ✓ TRMS Measurement
- ✓ 4 Rows 4 Digit Super Bright LED Display
- ✓ 3P2E3W / 3P3E4W User Selectable
- ✓ Programmable for CTR, PTR, Instrument Address, Password & MD Period
- ✓ Energy Import - Export (4Q Operation)
- ✓ Energy Retention
- ✓ RS485 Port, 5KV Isolated with MODBUS RTU Protocol with Software
- ✓ Auto / Manual Scroll Display

Click Here for Enquiry : https://www.mecoinst.com/contact-meco/enquiry-form.aspx?p_id=184

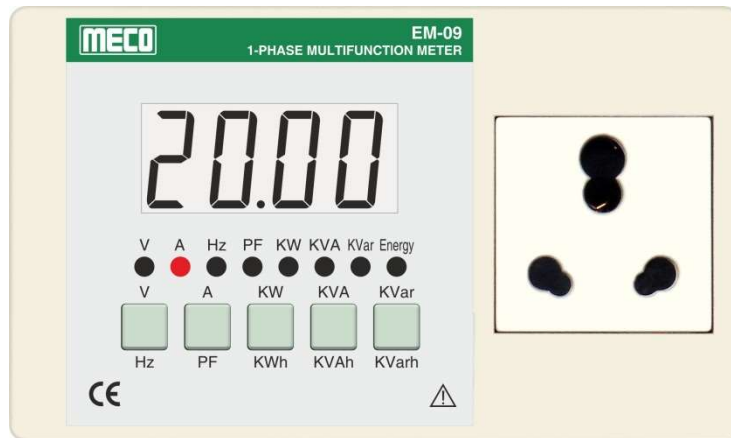
1 Phase Multifunction Meter - TRMS



- ✓ 4 Digit LCD Display with Backlight
- ✓ TRMS Measurement
- ✓ 10 Parameters on 10 Display Pages
- ✓ Measures V, A, PF, Hz, KW, KVA, KVar, KWh, KVAh & KVarh
- ✓ Programmable CTR (1.000 - 99.99)
- ✓ LED Indicator for Parameter Indication
- ✓ Power Master Software
- ✓ RS485 Port, 5KV Isolated with MODBUS RTU Protocol

Click Here for Enquiry : https://www.mecoinst.com/contact-meco/enquiry-form.aspx?p_id=65

1 Phase Multifunction Appliance Meter - TRMS



- ✓ 4 Digit LCD Display with Backlight
- ✓ TRMS Measurement
- ✓ 10 Parameters on 10 Display Pages
- ✓ Measures V, A, PF, Hz, KW, KVA, KVar, KWh, KVAh & KVarh
- ✓ LED Indicator for Parameter Indication
- ✓ Power Master Software
- ✓ RS485 Port, 5KV Isolated with MODBUS RTU Protocol
- ✓ Auto / Manual Scroll Display

Click Here for Enquiry : https://www.mecoinst.com/contact-meco/enquiry-form.aspx?p_id=138

POWER LINE TRANSDUCERS

CE

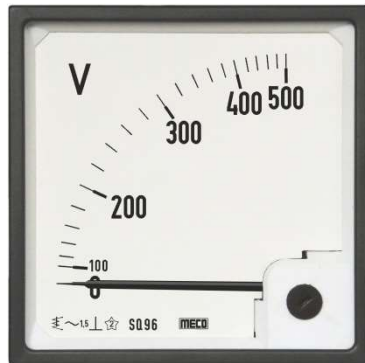


- ✓ Low Ripple in Output Signal
- ✓ Choice of Multiple Asymmetrical Outputs
- ✓ Wide Choices of Suppressed Ranges
- ✓ Open and Short Circuit Protection for Outputs
- ✓ Dual Output (Non-Isolated)
- ✓ Self-Powered, AC, DC, SMPS Auxilliary Supply
- ✓ Bi-Directional Outputs
- ✓ Fast Response Time
- ✓ Bi-Directional Inputs for Import / Export

Click Here for Enquiry : <https://www.mecoinst.com/meco-products/Power-Line-Transducers.aspx>

ANALOG PANEL METERS

CE



- ✓ AC Moving Iron Meters
- ✓ DC Moving Coil Meters
- ✓ AC Moving Coil Rectifier Type Meters
- ✓ Electronic Type W / VAR / PF / Hz Meters
- ✓ Rectangular AC & DC Meters
- ✓ Standard : IS1248
- ✓ Deflection : 90°C & 240°C
- ✓ Size (mm) : 72 x 72, 96 x 96, 144 x 144 & 110 x 110

Click for Enquiry : <https://www.mecoinst.com/meco-products/Analog-Panel-and-Switchboard-Meters.aspx>

4 Digit Programmable Ammeter / Voltmeter - TRMS

CE



- ✓ 4 Digit 9999 Counts Super Bright Display
- ✓ TRMS Using Microcontroller
- ✓ User Programmable Display (CT Primary / PTR / Shunt Value]
- ✓ Auto Selection of Decimal Point
- ✓ Over Range Indication
- ✓ 85-265V AC/DC or 48V DC Auxilliary Supply
- ✓ Accuracy $\pm 0.5\%$ of FSD
- ✓ Size (mm) : 72 x 72, 48 x 96 & 96 x 96

Click Here for Enquiry : https://www.mecoinst.com/contact-meco/enquiry-form.aspx?p_id=332

4 Digit Programmable Ammeter / Voltmeter - TRMS (Professional Series)

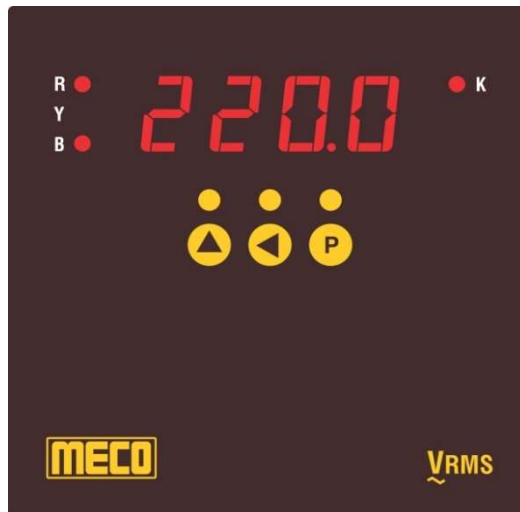
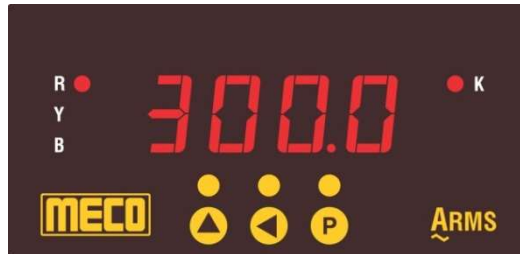


- ✓ 4 Digit 9999 Counts Red LED Super Bright Display
- ✓ TRMS Using Microcontroller
- ✓ User Programmable Display (CT Primary / PTR / Shunt Value)
- ✓ Auto Selection of Decimal Point
- ✓ Over Range Indication
- ✓ 85-265V AC/DC or 19-90V AC/DC Auxilliary Supply
- ✓ Accuracy $\pm 0.5\%$ of FSD
- ✓ Size (mm) : 48 x 96 & 96 x 96

Click Here for Enquiry : https://www.mecoinst.com/contact-meco/enquiry-form.aspx?p_id=327

3 Phase 4 Digit Programmable Ammeter / Voltmeter - TRMS

CE



- ✓ 4 Digit 9999 Counts Red LED Super Bright Display
- ✓ TRMS Using Microcontroller
- ✓ 1A / 5A Input in Same Meter (User Selectable)
- ✓ 3P3W / 3P4W User Selectable
- ✓ Auto / Manual Scroll Display (User Selectable)
- ✓ Auto Selection of Decimal Point
- ✓ 85 - 265V AC/DC or 19 - 90V AC/DC Auxilliary Supply
- ✓ Accuracy $\pm(0.5\% \text{ FSD} + 2 \text{ digits})$
- ✓ Size (mm) : 48 x 96 & 96 x 96

Click Here for Enquiry : https://www.mecoinst.com/contact-meco/enquiry-form.aspx?p_id=4

4 Digit Triple Range Programmable Process Indicator with IP-65 Protection



- ✓ Protection Level IP65 on Front (**Optional**)
- ✓ User Programmable 3 Input Ranges In One Meter
- ✓ Input : 4-20mA, 0-20mA & 0-10V DC
- ✓ 4 Digit 9999 Counts LED Display
- ✓ Programmable Display -1999 to 9999
- ✓ Decimal Point Selectable
- ✓ Overload Indication
- ✓ 85-265V AC/DC or 19-90V AC/DC Auxilliary Supply
- ✓ Accuracy $\pm 0.5\%$ of FSD
- ✓ Size (mm) : 48 x 96

Click Here for Enquiry : https://www.mecoinst.com/contact-meco/enquiry-form.aspx?p_id=302

4½ Digit Programmable Process Indicator with RS-485 Communication



- ✓ 4½ Digit 19999 Counts Red LED Super Bright Display
- ✓ Programmable Display -19999 to 19999
- ✓ RS485 Port 5KV Isolated with Modbus RTU Protocol (Optional)
- ✓ Decimal Point Selectable
- ✓ Overload and Underload Indication
- ✓ Accuracy $\pm 0.5\%$ of FSD
- ✓ 85-265V AC/DC or 19-90V AC/DC Auxilliary Supply
- ✓ Size (mm) : 72 x 144 & 144 x 144

Click Here for Enquiry : https://www.mecoinst.com/contact-meco/enquiry-form.aspx?p_id=328

4 Digit Digital Frequency Meter

CE



- ✓ 4 Digit 9999 Counts Red LED Display
- ✓ Interval Measurement Method using Microcontroller
- ✓ Wide Range 40 ~ 5000Hz (FDM4S & FDM964S)
- ✓ High Accuracy Across the Entire Range
- ✓ Auto Selection of Decimal Point
- ✓ Red Antiglare Faceplate with Annunciator
- ✓ Size (mm) : 48 x 96, 96 x 96, 72 x 144 & 144 x 144

Click Here for Enquiry : https://www.mecoinst.com/contact-meco/enquiry-form.aspx?p_id=8

5 Digit 3 Phase W / VAR / VA Meters (With Built-In Transducer) - with RS485



- ✓ TRMS Measurement
- ✓ 3 Phase Watt / Var / VA Meter
- ✓ 5 Digit 99999 Count (Max.) Super Bright Display
- ✓ Bi-Directional Input and Output Display
- ✓ 85-265V AC/DC or 19-90V AC/DC Auxilliary Supply
- ✓ Display Polarity Indication
- ✓ Auto Indication of K & M for Kilo & Mega
Respectively
- ✓ Sizes (mm) : 72 x 144 & 144 x 144

Click Here for Enquiry : https://www.mecoinst.com/contact-meco/enquiry-form.aspx?p_id=200

4 Digit Digital Power Factor Meter (with Built-In Transducer)

CE



- ✓ 4 Digit to indicate PF
- ✓ Available in 1P & 3 P (1P 1E 2W & 3P 1E 2W)
- ✓ Red LED (Standard)
- ✓ Resolution 0.001 PF
- ✓ L (Lagging / Inductive) or C (Leading / Capacitive)
- ✓ AC, DC and Self Powered Auxilliary Supply
- ✓ Accuracy ± 1 Degree Electrical
- ✓ Size (mm) : 96 x 96, 72 x 144 & 144 x 144

Click Here for Enquiry : https://www.mecoinst.com/contact-meco/enquiry-form.aspx?p_id=7

LCD / LED Modules



- ✓ 3½ Digit 1999 Counts & 4½ Digit 19999 Counts Display
- ✓ Resolution is 0.0001 to 1 Count Depending on Ranges
- ✓ Over Range Indication "1" or "-1"
- ✓ Decimal Point : Field Selectable
- ✓ 5V DC ± 10% Auxilliary Supply for GM135 & LC135 (LED Modules)
- ✓ 9V DC ± 10% Auxilliary Supply for GM035, DH035, GM035-BL, GM045 & LC035 (LCD Modules)

Click Here for Enquiry : https://www.mecoinst.com/contact-meco/enquiry-form.aspx?p_id=114

4½ Digit 19999 Counts TRMS Autoranging Digital Multimeter

CE



- ✓ 1000V DC & 750V AC
- ✓ 10A AC / DC
- ✓ Frequency, Capacitance, Resistance
- ✓ MIN / MAX, ΔZERO / REL
- ✓ Diode Test
- ✓ Audible Continuity
- ✓ Data Hold
- ✓ Backlight
- ✓ Auto Power Off
- ✓ CAT III 600V

Click Here for Enquiry : https://www.mecoinst.com/contact-meco/enquiry-form.aspx?p_id=242

3 $\frac{3}{4}$ Digit 4000 Counts 600A AC - TRMS Digital Clampmeter



- ✓ 600A AC
- ✓ 600V AC / DC
- ✓ Autoranging
- ✓ Temperature (K Type Thermocouple)
- ✓ NCV (LED, Buzzer & EF Strength)
- ✓ Torch Light + Backlight
- ✓ Capacitance, Resistance, Frequency
- ✓ Data Hold
- ✓ Auto Power Off

Click Here for Enquiry : https://www.mecoinst.com/contact-meco/enquiry-form.aspx?p_id=312

3⁵/₆ Digit 6000 Counts 1000A AC - TRMS Digital Clampmeter

CE



- ✓ 1000A AC
- ✓ 1000V DC & 750V AC
- ✓ Resistance, Capacitance & Frequency
- ✓ Temperature (K Type Thermocouple)
- ✓ Duty Cycle, Diode Test & Data Hold
- ✓ Auto / Manual Ranging
- ✓ Micro Amp Measurement for HVAC Flame Sensors

Click Here for Enquiry : https://www.mecoinst.com/contact-meco/enquiry-form.aspx?p_id=253

Leakage Current Tester

CE



- ✓ 10 μ A AC Ultra High Resolution
- ✓ 3½ Digit 1999 Counts LCD Display
- ✓ 600V AC / DC
- ✓ AC Current Ranges 0 - 20mA, 200mA, 2A, 60A
- ✓ Wide Frequency Response 40Hz ~ 400 Hz
- ✓ Data Hold
- ✓ Auto Power Off
- ✓ Jaw Opening Cable Dia 30mm max. (approx.)

Click Here for Enquiry : https://www.mecoinst.com/contact-meco/enquiry-form.aspx?p_id=308

Clamp - On Earth / Ground Resistance and Leakage Current Tester

CE



- ✓ Non Contact Ground Resistance Measurement
- ✓ 4 Digit 9999 Counts LCD Backlight Display
- ✓ No Auxilliary Electrodes Needed
- ✓ Ground Resistance Measurement 0.01Ω ~ 1000Ω
- ✓ Leakage Current (0.5mA ~ 30.00A) (Model 4680BLC)
- ✓ Data Storage Memory
- ✓ Data Hold, Noise Signal, Auto Power Off
- ✓ Suitable for Earthing Strip Upto 65mm
- ✓ Suitable for Round Conductor Upto 25mm Dia.

Click Here for Enquiry : https://www.mecoinst.com/contact-meco/enquiry-form.aspx?p_id=270

LCR Meter

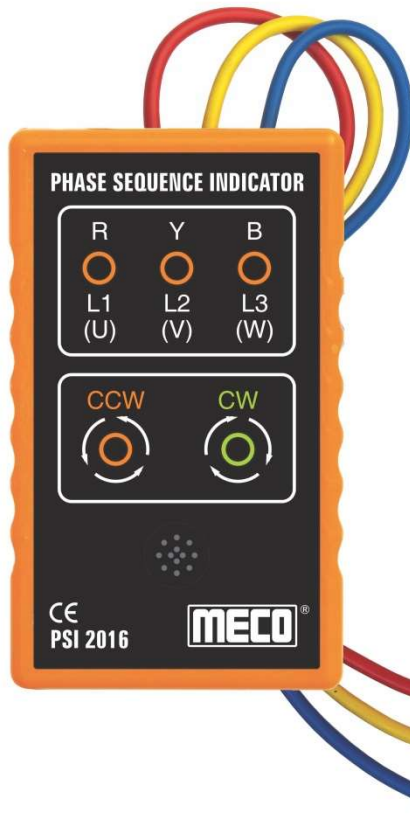


- ✓ Measures L, C, R, Z, D, Q, θ and ESR
- ✓ Signal Frequency 100Hz, 120Hz, 1KHz & 10KHz
- ✓ Automatic Identification Function (Ai)
- ✓ Test Terminals 2, 4 & 5 Terminals
- ✓ Automatic Correction Function with Data Hold / Max / Min / Average Recording
- ✓ Series & Parallel Modes, Short & Open Correction
- ✓ Holster and Backlight
- ✓ USB Interface with Software
- ✓ Rechargeable Battery and AC Adaptor

Click Here for Enquiry : https://www.mecoinst.com/contact-meco/enquiry-form.aspx?p_id=272

Phase Sequence Indicator

CE



- ✓ 3 Phase Sequence Indication (LED & Buzzer)
- ✓ Reverse Phase Indication (LED & Buzzer)
- ✓ Open Phase Indication (LED & Buzzer)
- ✓ Handy, Rugged & Self Powered
- ✓ R, Y & B Heavy Duty Probes
- ✓ Insulated Crocodile Clips for Safe Connection
- ✓ Voltage Range 100 ~ 600V AC (PH-PH)
- ✓ Frequency Range 40 ~ 400Hz
- ✓ No Battery Required
- ✓ Easy & Safe to Use

Click Here for Enquiry : https://www.mecoinst.com/contact-meco/enquiry-form.aspx?p_id=268

Non - Contact Voltage Detector

CE



- ✓ Voltage Range 90 ~ 1000V AC
- ✓ High Pitch Buzzer
- ✓ Fixed Sensitivity
- ✓ Red LED Light Warning
- ✓ Pen Pointer Electric Torch
- ✓ CAT III 1000V
- ✓ Safety Standard Pollution Degree 2
- ✓ Battery Operated
- ✓ Auto Power Off

Click Here for Enquiry : https://www.mecoinst.com/contact-meco/enquiry-form.aspx?p_id=301

Power and Harmonics Analyzer



- ✓ Analysis of 3P4W, 3P3W, 1P2W & 1P3W Systems
- ✓ Display of 35 Parameters in One Screen (3P4W)
- ✓ Programmable CT (1 to 600) and PT (1 to 3000) Ratio
- ✓ Graphic Phasor Diagram, RS-232C-USB Interface
- ✓ TRUE RMS Value, Active Power, Apparent & Reactive Power (KVA, KVAR)
- ✓ RMS, Peak Value and Crest Factor
- ✓ Average/Maximum Demand (KW, MW, KVA, MVA)
- ✓ Analysis of Total Harmonic Distortion (THD-F)

Click Here for Enquiry : https://www.mecoinst.com/contact-meco/enquiry-form.aspx?p_id=54

Clamp-On TRMS Power Meter (1000A, 600kW)

CE



- ✓ 1 ϕ and 3 ϕ (3 ϕ 3W / 3 ϕ 4W) Power Analyzer
- ✓ 4 Digit 9999 Counts LCD
- ✓ TRUE Power, AC Inrush Current, Phase Angle
- ✓ Dual Display, Autoranging
- ✓ HP, KW, KVA, KVAR, HZ, PF, AC A, AC / DC V
- ✓ Resistance, Capacitance, Temperature
- ✓ Diode Test, Data Hold, Auto Power Off
- ✓ Jaw Opening Cable / Conductor Upto 43mm / Bus Bar Upto 65 x 16mm

Click Here for Enquiry : https://www.mecoinst.com/contact-meco/enquiry-form.aspx?p_id=197

Multifunction Process Calibrator

CE



- ✓ 4 & 5 Digit LCD Display with Annunciator
- ✓ 4 - 20mA, 0 - 20mA & 0 - 24mA DC Selectable
- ✓ 0 - 100.00mV, 0 - 1.0000V, 0 - 12.000V DC
- ✓ Frequency Range 1 - 62500 Hz
- ✓ DC Current Basic Accuracy 0.025%
- ✓ Beeper Warning when Outputs is Open (mA) or Short (mV, V)
- ✓ K, J, E & T Thermocouples (°C & °F)
- ✓ Easy Key Pad Number Operation
- ✓ Easy Step & Auto Ramp Functions

Click Here for Enquiry : https://www.mecoinst.com/contact-meco/enquiry-form.aspx?p_id=74

Contact Us

Region	 	
North India & Goa	+91-93244 11558	ni1@mecoinst.com ni2@mecoinst.com
South India	+91-93242 89268	si1@mecoinst.com si2@mecoinst.com
East India, M.P. & Gujarat	+91-93244 05281	emg1@mecoinst.com emg2@mecoinst.com
Maharashtra	+91-93720 11735	mh1@mecoinst.com